

# Biomarkers

ChemPartner



ChemPartner has developed cutting edge technologies to provide excellent services for your drug discovery programs. Our staff members possess biotechnology & pharmaceutical R&D experience to understand your needs and know how to meet your demands.



Nikon 90i

By working with us using biomarker strategies, our customers are able to benefit

significantly from our well developed technologies and move their projects forward faster. For example, NanoPro platform enables quantification of protein phosphorylation in very small amount of samples, such as biopsies & stem cells. FISH allows the detection of HER2 amplification in cell lines as well as in patient samples. Overall, we strive to provide excellent service to support your drug discovery and translational medicine needs.



ABI Real-time PCR

## Contact

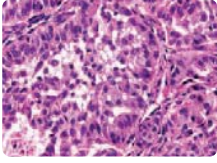
998 Halei Road #5 Zhangjiang Hi-Tech Park Pudong  
Shanghai, China 201203  
China: +86 21 5132 0000 USA: +1 781 996 5291  
Europe: +45 4586 9000 Japan: +81 3 62027441  
contact@chempartner.com  
www.chempartner.com

Yingjia Zhang, Ph.D  
Sr. Director, Cell Biology  
Tel: +86 21 5137 1319  
yjzhang1@chempartner.com

# Molecular Pathology Service

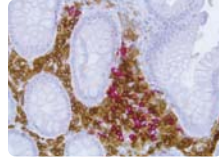
## Histopathology

- FFPE & Cryosection
- H&E staining
- Special Staining



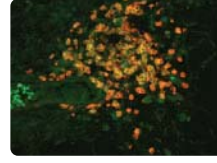
## IHC

- Assay development
- Semi-quantification
- Double IHC
- IHC on tissue microarray



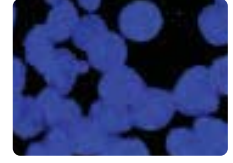
## Immunofluorescence

- Standard protocols
- Assay development
- Double IF



## FISH

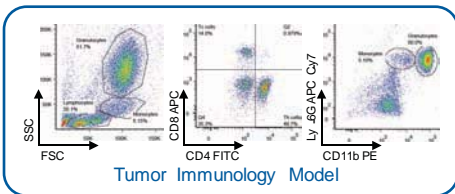
- Deletion
- Amplification
- Translocation



# Flow Cytometry Service

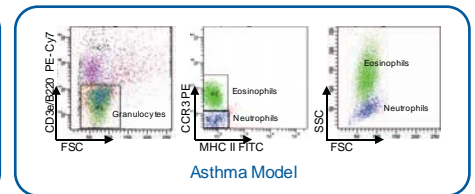
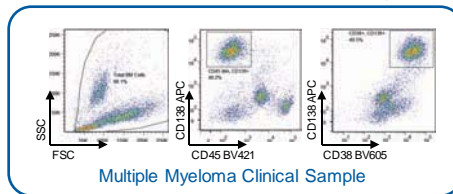
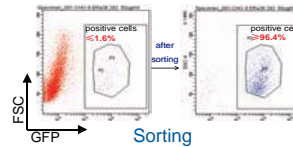
## Biomarkers Analysis

- Tumor immunology model
- Clinical cancer samples
- Inflammation model



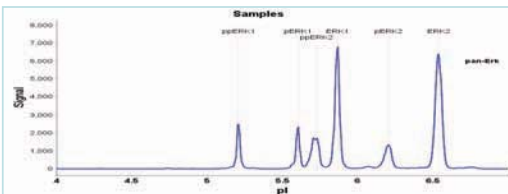
## High speed sterile sorting

- Stable/transient over expression cells, cancer stem cells.



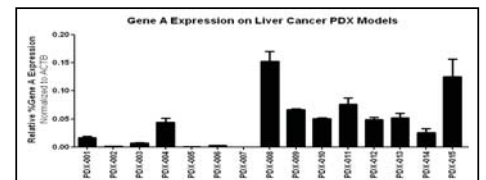
# NanoPro Platform and Quantitative PCR

## Phospho- and non phospho-protein detection



Name	pl	%Area
ppERK	5.207	7.11
pERK1	5.207	6.96
ppERK	5.719	11.85
ERK1	5.864	26.47
pERK2	6.202	7.43
ERK2	6.536	40.17

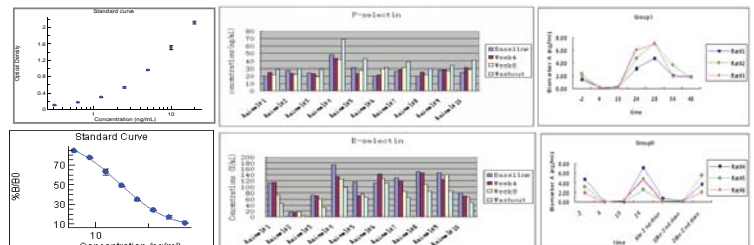
## Taqman Analysis



# Large Molecular Bioanalytical Service

## Classical ELISA Platform

- Biomarker detection using commercial kits
- Assay development from scratch
- Clinical sample detection under GLP regulation



## Multiplex Analytical Platform

- Luminex platform
- MSD platform

