



# Biologics CMC

**ChemPartner**  
Dedicated to LifeScience

## One-stop Shop Biologics CMC Service Provider

### Cell Line Development

- GMP-banked DG44 and CHO-S cells
- Fast speed: 4-6 months from DNA to lead clones
- Clone titer above 2 g/L in fed-batch
- Quality analysis to guide clone selection

### Cell Culture Process

- Platform approach to increase volumetric and specific productivity
- >40 bioreactors from 15mL to 50L for media and process optimization
- Protein characterization for quality attributes

### Purification Process

- Platform approach to optimize purification process (Protein A, CEX, AEX, etc)
- Total purification solutions with high protein yield

### Scale-up manufacture

- Single-use system for 50L scale and up
- Manufacture facility designed to comply with GMP requirement
- DS & DP suites to supply clinical samples

**12 months from cell line development to completion of three consecutive IND lots**

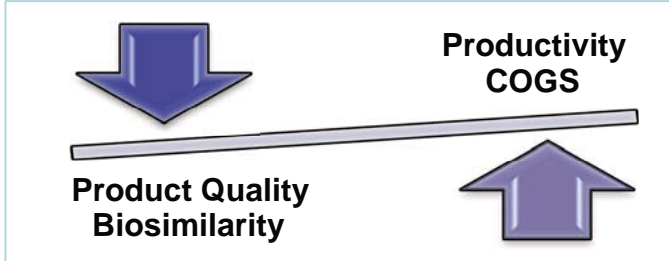
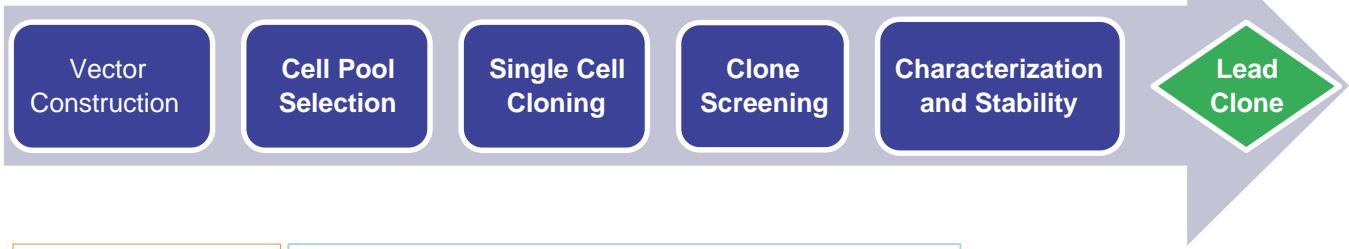
6-7 weeks

### Contact

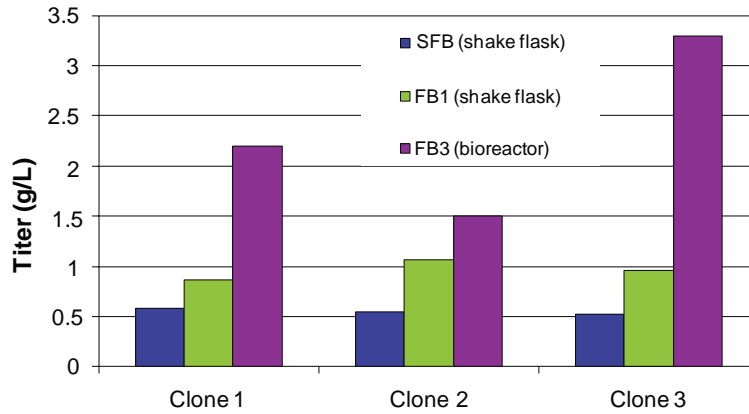
998 Halei Road #5 Zhangjiang Hi-Tech Park Pudong  
Shanghai, China 201203  
China: +86 21 5132 0000 USA: +1 781 996 5291  
Europe: +45 4586 9000 Japan: +81 3 62027441  
contact@chempartner.com  
www.chempartner.com

Zhihua xiao, PhD  
zhhxiao@chempartner.cn

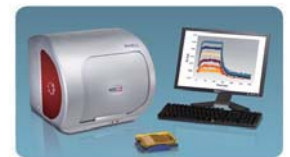
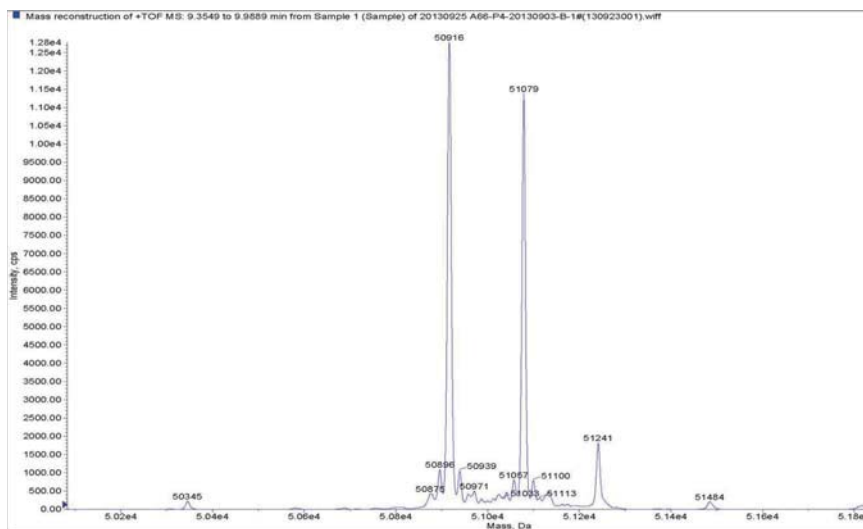
# Cell line development workflow



## High titer process



## Protein quality attributes



All ChemPartner animal facilities are AAALAC accredited and OLAW assured.