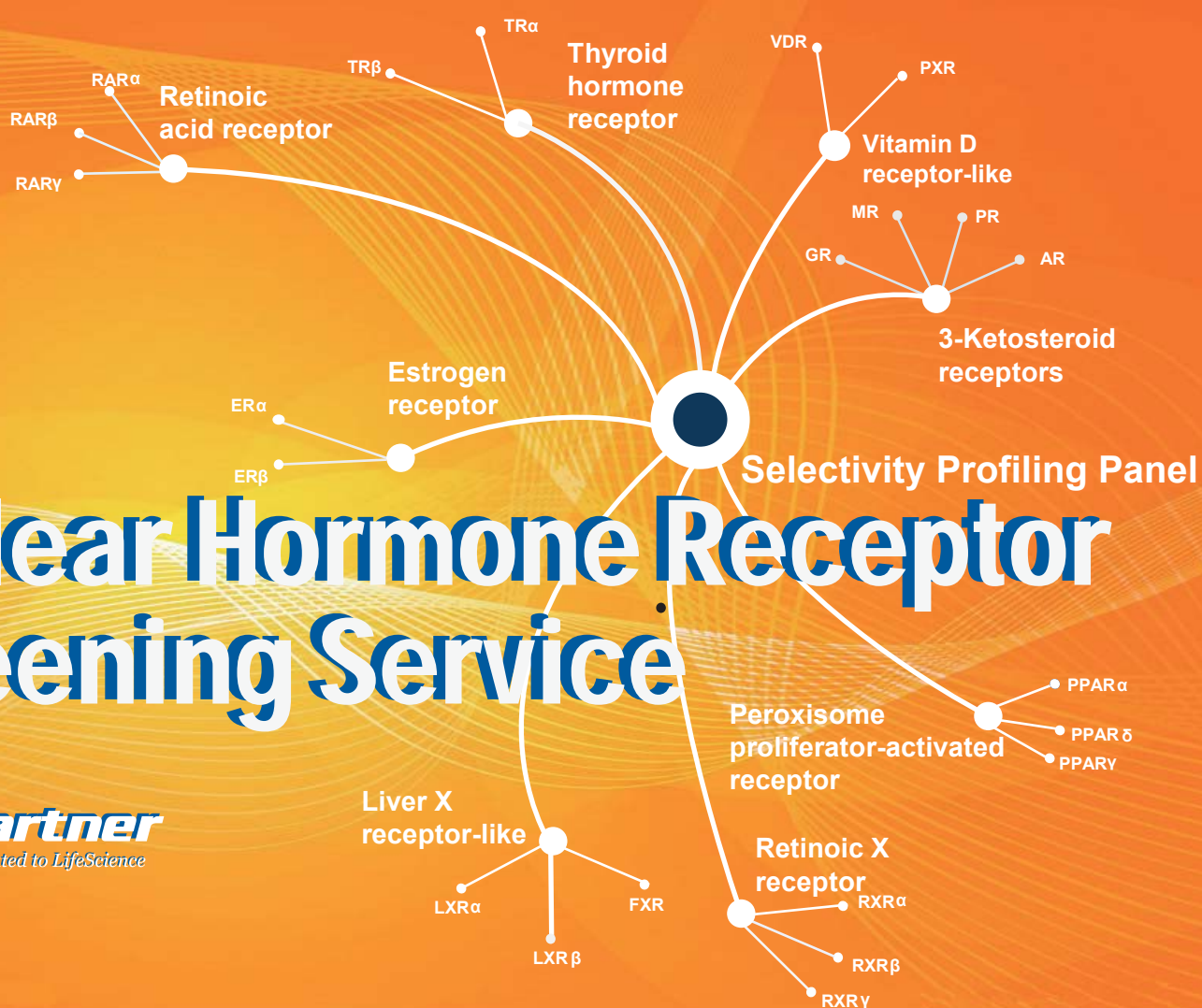


Nuclear Hormone Receptor Screening Service

ChemPartner
Dedicated to LifeScience



Overview

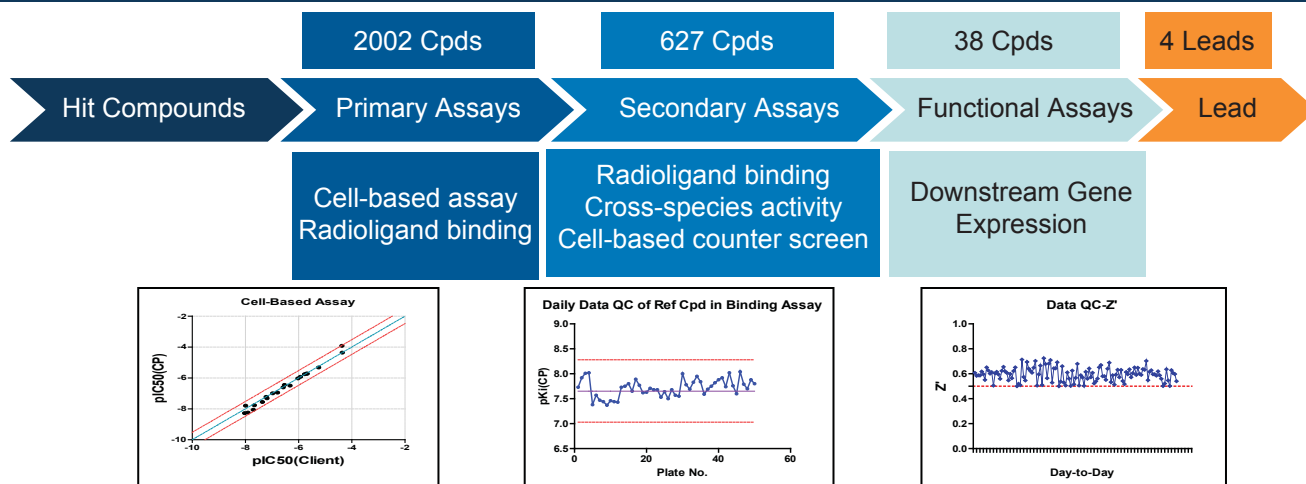
Multiple assay platforms:

- **Cell-based assays**
Gal4 DBD-NHR LBD reporter assay
Full length NHR reporter assay
- **Biochemical assays**
TR-FRET co-activator recruitment assay
Radioligand binding assay

Broad service scope:

- High-throughput screening
- Lead optimization
- Selectivity panel
- IC50 determination
- Compound mode of action

Drug Discovery Project: Hit-to-Lead

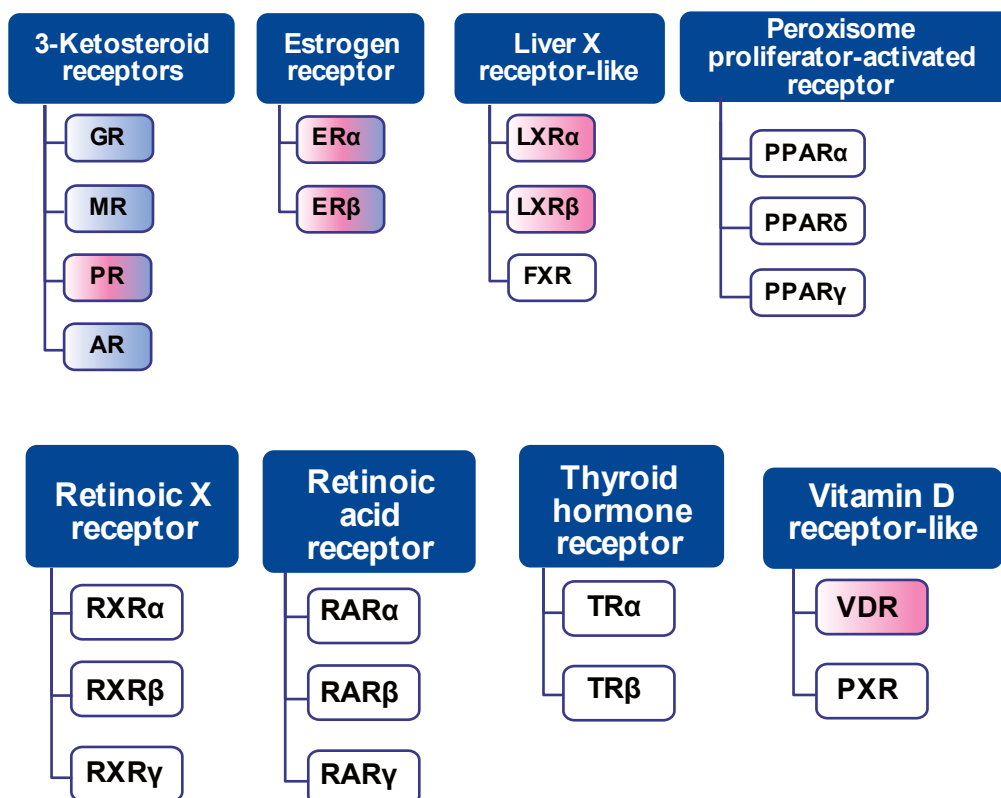


Contact

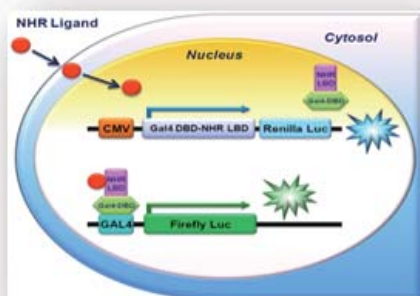
998 Halei Road #5 Zhangjiang Hi-Tech Park
Pudong Shanghai, China 201203
China: +86 21 5132 0000 USA: +1 781 996 5291
Europe: +45 4586 9000 Japan: +81 3 62027441
contact@chempartner.com
www.chempartner.com

Yijun Lin, PhD
Executive Director
yjlin@chempartner.cn

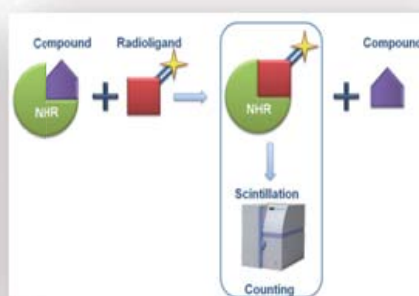
Selectivity Profiling Panel



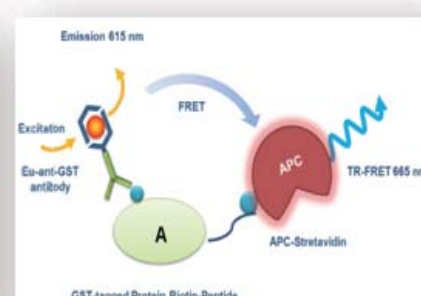
Cell-based Reporter



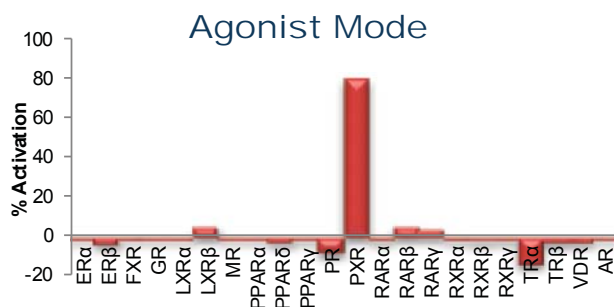
Radioisotope binding



TR-FRET Coactivator Recruitment



Compound Selectivity Profiling on 22 NHRs



- Goal: compound selectivity profiling
- Cell-based luciferase reporter assay on 22 NHRs provides the information of compound selectivity for SAR guidance.