

TUMOR

IMMUNOLOGY

ChemPartner offers a broad array of *in vitro* assays and *in vivo* models to fast-forward your immuno-oncology drug discovery.

IMMUNE-MODULATING TARGET

ANTIBODY APPROACH

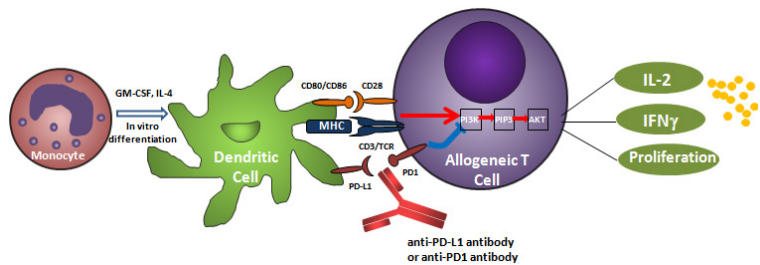
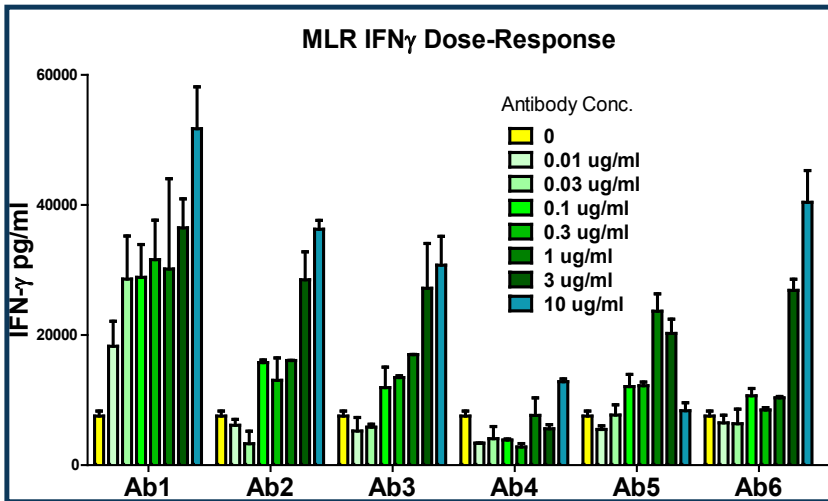
Antibody Generation	<ul style="list-style-type: none"> Hybridoma Phage display Hlg transgenic mice
Lead Identification	<ul style="list-style-type: none"> Binding assays Target specific assays
Lead Optimization	<ul style="list-style-type: none"> Humanization Affinity maturation
Lead Characterization	<ul style="list-style-type: none"> MLR and other hPBMC assays <i>In vivo</i> efficacy (humanized mouse model, hTg KI mice)
Candidate	

SMALL MOLECULE APPROACH

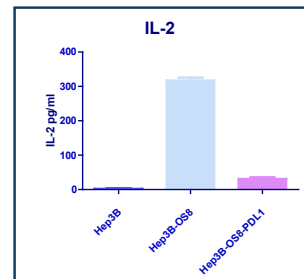
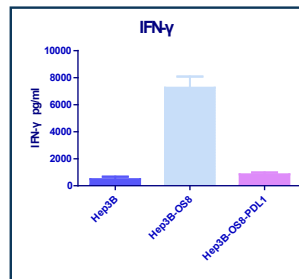
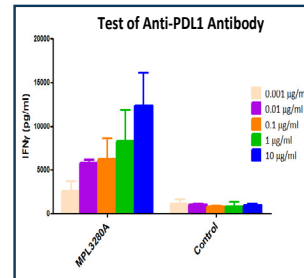
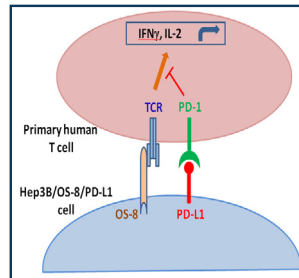
Compound Generation	<ul style="list-style-type: none"> Chemical synthesis MedChem
Compound Pool	<ul style="list-style-type: none"> Target specific assays: enzyme, cell-based <i>In vitro</i> assays
Early Leads	<ul style="list-style-type: none"> Syngeneic models Combination therapies <i>Ex vivo</i> analysis
Lead(s)	<ul style="list-style-type: none"> hPBMC assays Antigen specificity
Candidate	

Surrogate Abs
Cross-reactive Abs

MIXED LYMPHOCYTE REACTION MLR ASSAY



TUMOR CELL & T CELL CO-CULTURE ASSAY



IN VITRO TUMOR IMMUNOLOGY ASSAYS

IN VIVO TUMOR IMMUNOLOGY MODELS

With over 20 well-characterized syngeneic models and humanized mouse models, we offer our customers a complete pharmacology solution - the case study shown here is an example of how 'hidden value' of a targeted therapy was uncovered employing our platform:

Lead CPD with good PK, efficacy in 1 CDX model

Efficacy in 4T1 model, SC tumor, metastasis

MOA: Immune response

Combination efficacy

Immune memory & specificity

1st syngeneic model

More syngeneic & nude mice

Combination

Re-challenge

