

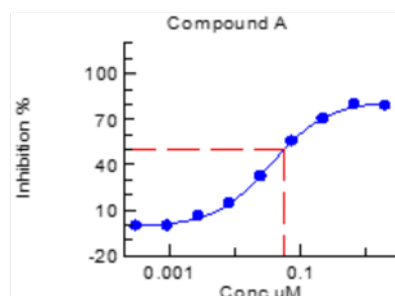
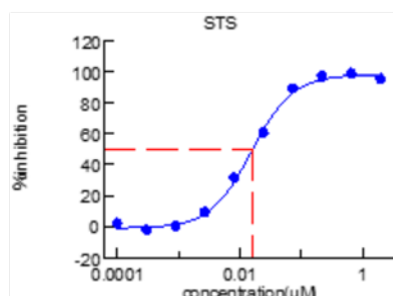
CANCER CELL LINE PANEL SCREENING

Leading Cell-Based Assay Service

With over 800 cancer cell lines in house, ChemPartner covers all the major cancer types and includes cell lines from commercial sources such as ATCC, ECACC, DSMZ, RIKEN, JCRB, as well as our proprietary PDX-derived primary cancer cell lines.

All the cell lines have been tested to be mycoplasma free, and >90% of the cell lines have been through thorough characterization including determination of cell doubling time, seeding densities, and reference compound testing. Cancer cell line anti-proliferation panel screening is routinely carried out by a dedicated team in our 800 m² cell culture facility well equipped with state-of-the-art instrumentation.

Example Data



Testing Conditions

- Plate Formats:
 - 96-well plate
 - 384-well plate
- Assay Formats:
 - Cell Titer Glo
 - Cyquant
 - 3D Growth Assays
- Number of Doses per Compound:
 - 9-10 doses IC50 format
 - Single Dose
 - Double Doses
- Number of Replicates:
 - Triplicates
 - Duplicates
 - Singleton
- Time of Compound Treatment:
 - 72 hours
 - 2 Cell Doubling Time
 - Other client preferred duration

Deliverables

- Documented methods and testing conditions
- Quality Control Statement (Z', SW, CV%, Reference Compound Data)
- Experimental Results (% Inhibition, Curve Fitting and Compound IC50s by XLfit or GraphPad Prism if applicable)

Sample Submission

- Testing compounds can be submitted as dry powder or in DMSO stock. 2-5 mg per compound is adequate for most of the panel screenings.

Related Services

- Combination Studies
- Target Engagement Assays
- Cell Apoptosis Assay, Cell Cycle Analysis, Protein Phosphorylation
- Xenograft Models

Cell Line Tissue Origin	Number of Cell Lines	Source	Assay Format	Timeline (For <40 Cell Lines)
Lung Cancer	156	ATCC, ECACC, CLS, RIKEN, JCRB, KCLB, SIBS	96-well plate 3 84-well plate	2-4 weeks
Leukemia	54	ATCC, ECACC, DSMZ, RIKEN, JCRB, KCLB, SIBS	96-well plate 384-well plate	2-4 weeks
Brain Cancer	57	ATCC, ECACC, CLS, RIKEN, JCRB, KCLB, SIBS	96-well plate 3 84-well plate	2-4 weeks
Breast Cancer	42	ATCC, CLS, SIBS	96-well plate 384-well plate	2-4 weeks
Lymphoma	47	ATCC, DSMZ, JCRB	96-well plate 384-well plate	2-4 weeks
Liver Cancer	49	ATCC, JCRB, KCLB, SIBS, ChemPartner	96-well plate 384-well plate	2-4 weeks
Colon Cancer	38	ATCC, ECACC, SIBS	96-well plate 384-well plate	2-4 weeks
Melanoma	33	ATCC, ECACC, CLS, RIKEN, JCRB	96-well plate 384-well plate	2-4 weeks
Pancreatic Cancer	43	ATCC, ECACC, RIKEN, JCRB, ChemPartner	96-well plate 384-well plate	2-4 weeks
Ovarian Cancer	31	ATCC, ECACC, JCRB, KCLB, SIBS	96-well plate 384-well plate	2-4 weeks
Esophagus Cancer	25	ECACC, DSMZ, CLS, RIKEN, JCRB, SIBS	96-well plate 384-well plate	2-4 weeks
Kidney Cancer	25	ATCC, RIKEN, JCRB, SIBS	96-well plate 384-well plate	2-4 weeks
Gastric Cancer	35	ATCC, JCRB, RIKEN, SIBS	96-well plate 384-well plate	2-4 weeks
Bone Cancer	19	ATCC, ECACC, CLS, JCRB	96-well plate 384-well plate	2-4 weeks
Bladder Cancer	14	ATCC, ECACC, CLS	96-well plate 384-well plate	2-4 weeks
Tongue Cancer	12	ATCC, ECACC, JCRB, KCLB	96-well plate 384-well plate	2-4 weeks
Myeloma	13	ATCC, DSMZ	96-well plate 384-well plate	2-4 weeks
Prostate Cancer	7	ATCC, SIBS	96-well plate 384-well plate	2-4 weeks
Mesothelioma	21	ECACC, RIKEN, SIBS	96-well plate 384-well plate	2-4 weeks
Others	72	ATCC, ECACC, DSMZ, CLS, RIKEN, JCRB, KCLB, SIBS	96-well plate 384-well plate	2-4 weeks